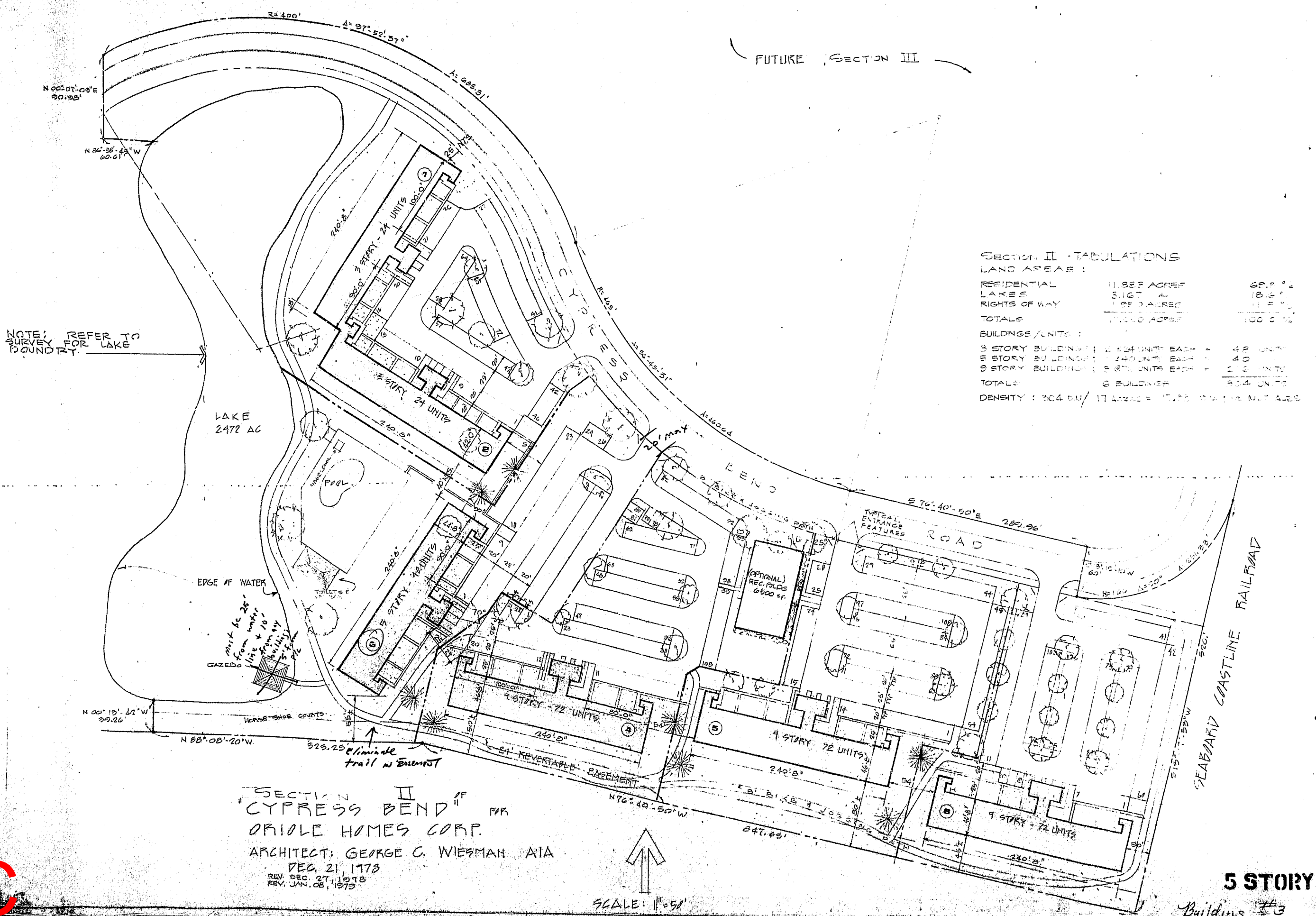


ARCHITECT:  
 GEORGE C. WIESMAN AIA  
 1151 COPIES ROAD - FORT LAUDERDALE, FLA.

SECTION II  
 CYPRESS BEND  
 ORIOLE HOMES CORP.

REVISION  
 NO. 1: 11/17/77  
 NO. 2: 12/21/77  
 NO. 3: 1/10/78  
 NO. 4: 1/10/78  
 NO. 5: 1/10/78  
 NO. 6: 1/10/78  
 NO. 7: 1/10/78  
 NO. 8: 1/10/78  
 NO. 9: 1/10/78  
 NO. 10: 1/10/78  
 NO. 11: 1/10/78  
 NO. 12: 1/10/78  
 NO. 13: 1/10/78  
 NO. 14: 1/10/78  
 NO. 15: 1/10/78  
 NO. 16: 1/10/78  
 NO. 17: 1/10/78  
 NO. 18: 1/10/78  
 NO. 19: 1/10/78  
 NO. 20: 1/10/78  
 NO. 21: 1/10/78  
 NO. 22: 1/10/78  
 NO. 23: 1/10/78  
 NO. 24: 1/10/78  
 NO. 25: 1/10/78  
 NO. 26: 1/10/78  
 NO. 27: 1/10/78  
 NO. 28: 1/10/78  
 NO. 29: 1/10/78  
 NO. 30: 1/10/78  
 NO. 31: 1/10/78  
 NO. 32: 1/10/78  
 NO. 33: 1/10/78  
 NO. 34: 1/10/78  
 NO. 35: 1/10/78  
 NO. 36: 1/10/78  
 NO. 37: 1/10/78  
 NO. 38: 1/10/78  
 NO. 39: 1/10/78  
 NO. 40: 1/10/78  
 NO. 41: 1/10/78  
 NO. 42: 1/10/78  
 NO. 43: 1/10/78  
 NO. 44: 1/10/78  
 NO. 45: 1/10/78  
 NO. 46: 1/10/78  
 NO. 47: 1/10/78  
 NO. 48: 1/10/78  
 NO. 49: 1/10/78  
 NO. 50: 1/10/78  
 NO. 51: 1/10/78  
 NO. 52: 1/10/78  
 NO. 53: 1/10/78  
 NO. 54: 1/10/78  
 NO. 55: 1/10/78  
 NO. 56: 1/10/78  
 NO. 57: 1/10/78  
 NO. 58: 1/10/78  
 NO. 59: 1/10/78  
 NO. 60: 1/10/78  
 NO. 61: 1/10/78  
 NO. 62: 1/10/78  
 NO. 63: 1/10/78  
 NO. 64: 1/10/78  
 NO. 65: 1/10/78  
 NO. 66: 1/10/78  
 NO. 67: 1/10/78  
 NO. 68: 1/10/78  
 NO. 69: 1/10/78  
 NO. 70: 1/10/78  
 NO. 71: 1/10/78  
 NO. 72: 1/10/78  
 NO. 73: 1/10/78  
 NO. 74: 1/10/78  
 NO. 75: 1/10/78  
 NO. 76: 1/10/78  
 NO. 77: 1/10/78  
 NO. 78: 1/10/78  
 NO. 79: 1/10/78  
 NO. 80: 1/10/78  
 NO. 81: 1/10/78  
 NO. 82: 1/10/78  
 NO. 83: 1/10/78  
 NO. 84: 1/10/78  
 NO. 85: 1/10/78  
 NO. 86: 1/10/78  
 NO. 87: 1/10/78  
 NO. 88: 1/10/78  
 NO. 89: 1/10/78  
 NO. 90: 1/10/78  
 NO. 91: 1/10/78  
 NO. 92: 1/10/78  
 NO. 93: 1/10/78  
 NO. 94: 1/10/78  
 NO. 95: 1/10/78  
 NO. 96: 1/10/78  
 NO. 97: 1/10/78  
 NO. 98: 1/10/78  
 NO. 99: 1/10/78  
 NO. 100: 1/10/78

DATE  
 DEC. 21, 1977  
 SHEET  
 1



SECTION II - TABULATIONS

LAND AREAS:

RESIDENTIAL	11.883 ACRES	69.9 %
LAKE	2472 AC	18.6 %
RIGHTS OF WAY	1.000 ACRES	1.5 %
TOTALS	12.883 ACRES	100.0 %

BUILDINGS/UNITS:

5 STORY BUILDINGS	2 BLDGS	48 UNITS
8 STORY BUILDINGS	2 BLDGS	48 UNITS
9 STORY BUILDINGS	3 BLDGS	216 UNITS
TOTALS	7 BUILDINGS	312 UNITS

DENSITY: 304 DU/17 ACRES = 17.88 DU/AC NET AREA

SECTION II  
 "CYPRESS BEND"  
 ORIOLE HOMES CORP.  
 ARCHITECT: GEORGE C. WIESMAN AIA  
 DEC. 21, 1977  
 REV. DEC. 27, 1978  
 REV. JAN. 06, 1979

5 STORY  
 Buildings #3

DRC

PZ23-12000023  
 10/16/2024